

TOWEL BAR (URBAN METAL QUEST SERIES) INSTRUCTION **PXB-UM06-450-Q1**



A lattice pattern that combines both modern and classic elements into a seamless holistic towel rack design and finish. The resulting ambience is both precise and 3 dimensional, bestowing a graceful beauty on its surroundings.

Features

A wide array of matching products is available, allowing for total design coordination.

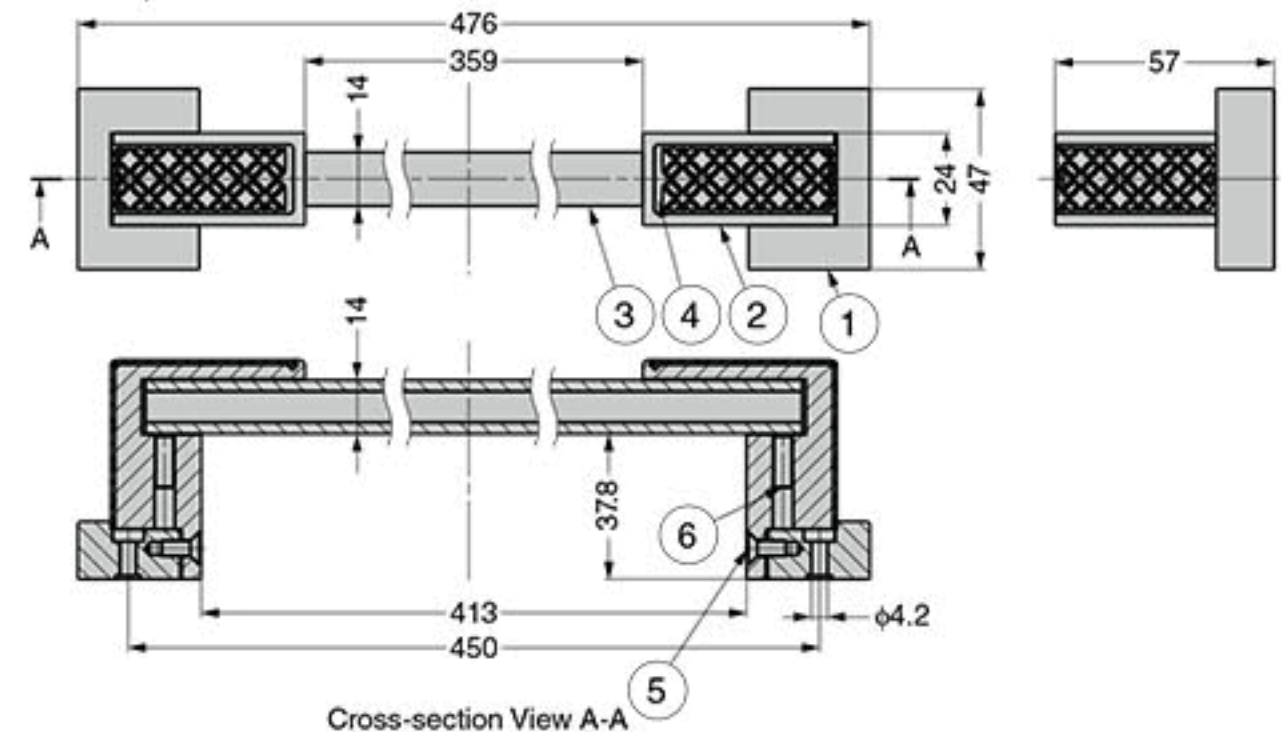
Parts Included

- Size 4 x 32 cross-recessed pan head tapping screws
- Nominal 2.5 hex bar spanner



PXB-UM06-450-Q1-BL

PXB-UM06-450-Q1-GL



Cross-section View A-A

No.	Part Name	Material	Finish
①	Base	Aluminium Alloy	See table below
②	Arm		
③	Bar		
④	Decorative Plate	Free-Cut Brass	Baked Enamel Finish/Black, Gold Plain
⑤	Hex Socket Flat Head Screws	Stainless Steel	
⑥	Hexagon Socket Set Screws		

CAD	Item Code	Item Name	Material	Finish/Colour(Main Body)	Finish (Decorative Plate)	Load Capacity N	Load Capacity kgf	Weight (g)	Box (pcs)	Carton (pcs)
	280-033-749	PXB-UM06-450-Q1-BL	Aluminium Alloy,	Anodised/Matte Black	Black Nickel Plating	100	10.2	400	1	8
	280-033-750	PXB-UM06-450-Q1-GL	Free-Cut Brass	Anodised/Matte Gold	24K Gold Plating				1	8